

310206-SM-CC-EC

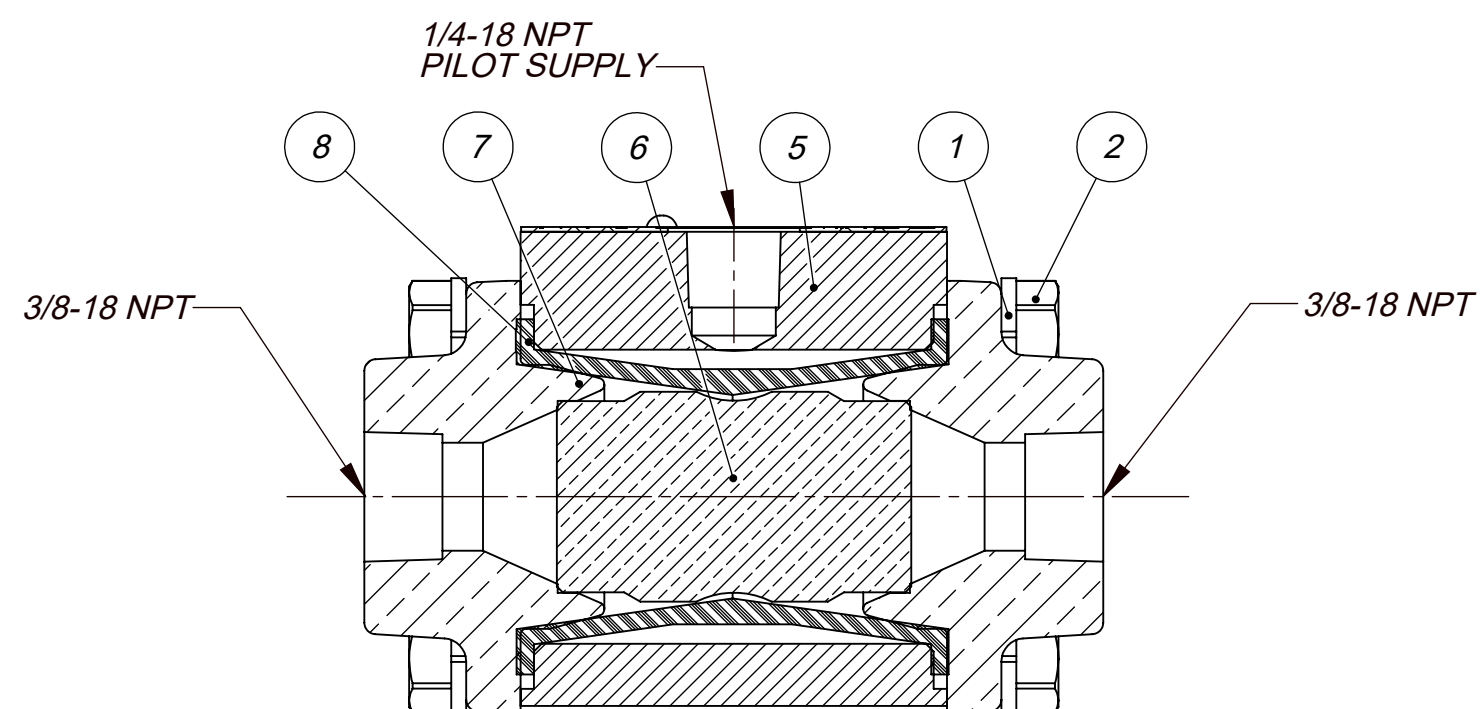
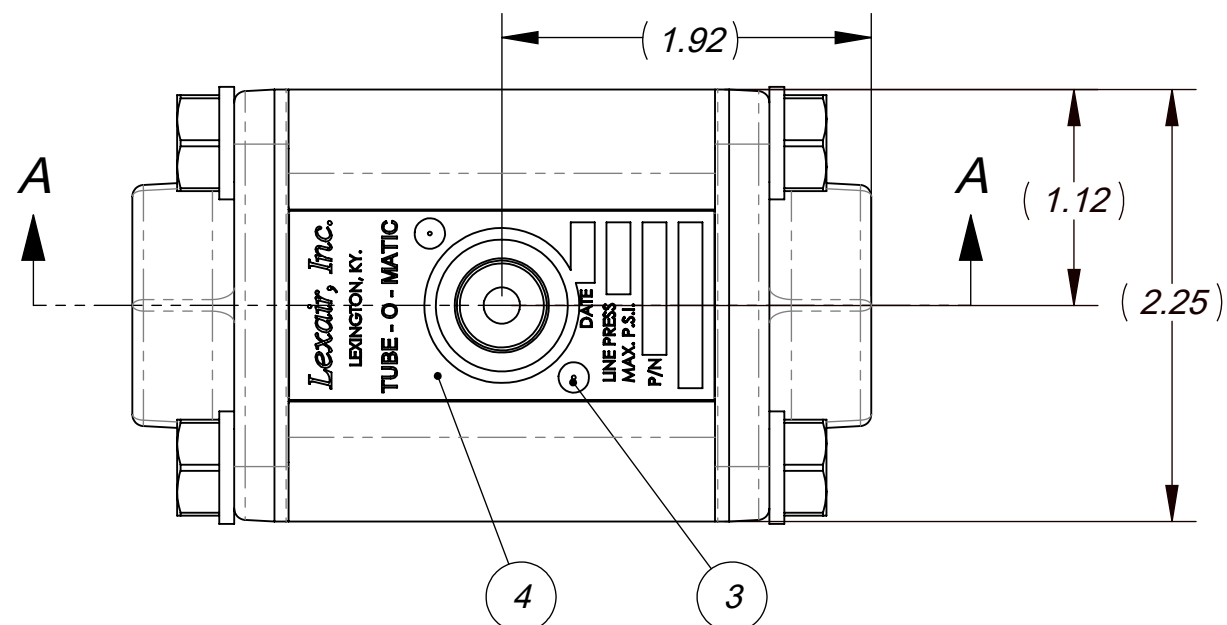
ITEM NO.	PART NUMBER	DESCRIPTION	QTY.
1	01-0201	LOCKWASHER, REGULAR, 5/16, ZINC	8
2	01-0706	SCREW, 5/16-18 X .75 ZN	8
3	01-2023-2	SCR., DRIVE #2 X .188	2
4	20-1889	NAME PLATE, TUBE-O-MATIC	1
5	20-1893	BODY 1/4 3/8 1/2 NPT	1
6	SE TBL (CC)	CENTER CORE	1
7	SEE TBL (EC)	END CAP	2
8	SEE TBL (SM)	SLEEVE	1

SLEEVE MATERIAL OPTIONS (SM)		
CODE	MATERIAL	PART NO.
STD	BUNA - N	20-1037
26	VITON	20-1031
29	EPR	20-1032

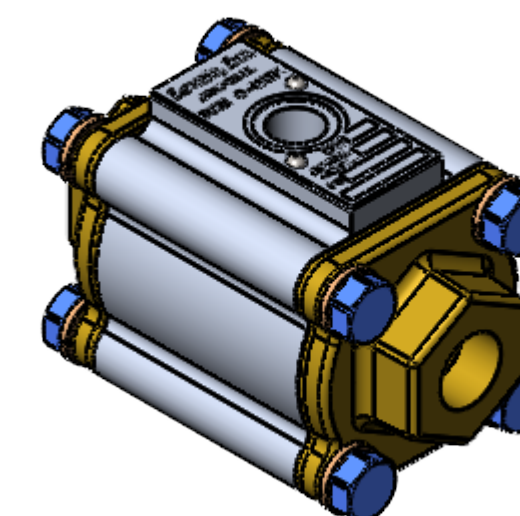
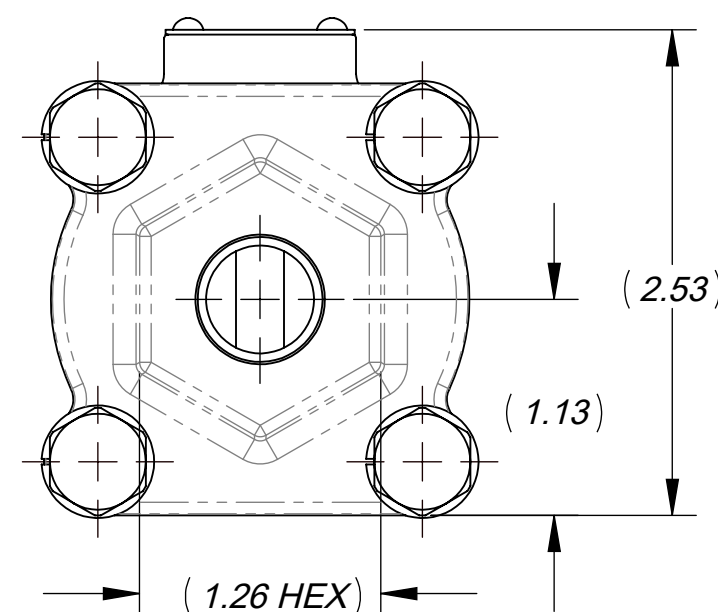
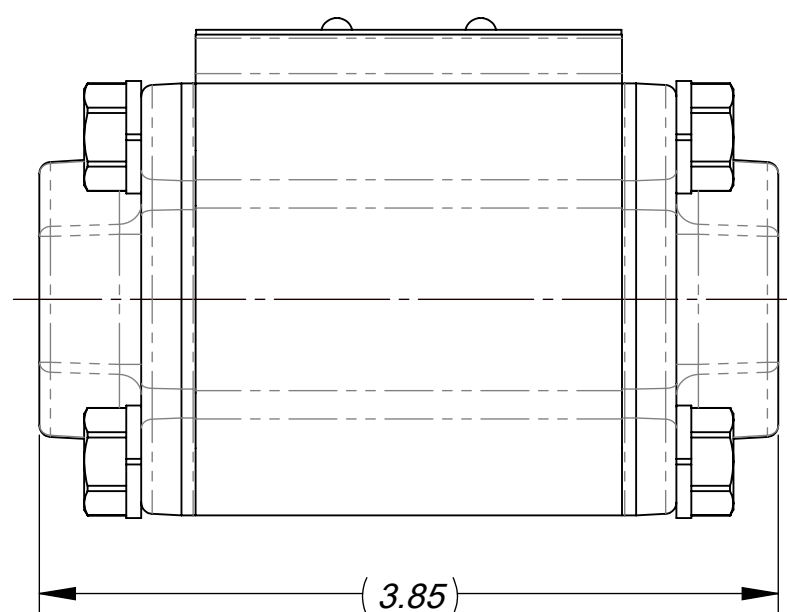
CENTER CORE OPTIONS (CC)		
CODE	MATERIAL	PART NO.
STD	NI PLT BRASS	20-1038
43	PVC	20-1361
45	STNLESS STL	20-1059
46	TEFLON	20-1058

END CAP OPTIONS		
CODE	MATERIAL	PART NO.
STD	NI PLT BRNZE	20-1043
57	PVC	20-1066
59	316 STNLESS	20-1063

- NOTES:**
1. PILOT PRESSURE TO MEDIA PRESSURE RATIO 1:1
 2. OPERATING PRESSURE: 150 PSI MAX
 3. TEMPERATURE RANGE: -30° F TO 225° F
 4. PRIMARY OPERATOR: DIRECT PILOT
 5. SERVICE MEDIA: LIQUID AND INERT GASSES
 6. SLEEVE MATERIAL: SEE TABLE SLEEVE MAT. OPTIONS (SM)
(FOR ALL OTHERS CONSULT THE FACTORY)
 7. FOR MAXIMUM SLEEVE LIFE, THE PILOT TO MEDIA PRESSURE DIFFERENTIAL SHOULD NOT EXCEED 20 PSI.
FOR MEDIA PRESSURE BELOW 50 PSI, THE PILOT PRESSURE IS MEDIA PRESSURE PLUS 15 PSI
 8. ASSEMBLY REF. DIMENSIONS: (DIM.) = PLUS OR MINUS 0.07



SECTION A-A



THIS DOCUMENT AND ITS CONTENTS ARE THE PROPERTY OF LEXAIR, INC. THEY ARE FURNISHED TO YOU ON THE FOLLOWING CONDITIONS:
 NO RIGHT OR LICENSE IN RESPECT OF THIS DOCUMENT OR ITS CONTENTS, EITHER OR WAIVED IN SUPPLYING THE DOCUMENT TO YOU.
 THIS DOCUMENT OR ITS CONTENTS ARE NOT TO BE USED OR TREATED IN ANY MANNER INCONSISTENT WITH THE RIGHTS OF LEXAIR, INC.
 OR TO ITS DETRIMENT AND ARE NOT TO BE COPIED, REPRODUCED, OR DISCLOSED OF, EXCEPT WITH ITS PRIOR WRITTEN CONSENT.

REVISIONS

REV.	DESCRIPTION	DATE
B	PREVIOUS REVS. OMITTED. REDRAWN TO CURRENT ENG. STDS. ECL: 06109 10-04-06 HWP TPO	
C	UPDATED DRAWING TO CURRENT ENG. STDS. ECL: 21032 06-09-21 TES	
D	UPDATED DRAWING TO CURRENT ENG. STDS. ECL: 21032 06-21-21 TES	

ECL: 06109

Tolerances Unless Otherwise Specified:			MATERIAL SPEC.	PC. NO.:		
TYPE	FINISHED	AS CAST	SEE TABLE	310206		
DEC .00	± .015"	± .030"	PROCESS SPEC. SEE TABLE	MADE FROM:		
DEC .000	± .005"	± .010"		MODEL FILE: 310206.SLDASM		
FRACTIONAL	± 1/64"	± 1/32"		CAD FILE: 310206.slddrw		
ANGLES °	± 1/2°	± 1°		C 310206		
FINISH 175 µ in.						
T-O-M ASSY, 3/8", STD.						
2025 Mercer RD, Lexington, Kentucky 40511			DRAWN HWP	CHECKED TPO	APRVD. TPO	SHEET NO. 1 of 1 SCALE 1:1 APPROX. WT. 2.533 lbs.